

PATTESON'S CROSS

Though re-sited from its original position, it was erected as a public witness, deliberately next to the then main road.

The monument was refurbished in 2016 and the following year rededicated by the Melanesian Bishop of Temotu, the diocese which includes the island of Nukapu where Patteson died. At the rededication the Bishop of Temotu said:

"Bishop Patteson is very important to the people of Melanesia and we give thanks for his ministry, bringing the people of Devon and Melanesia closer together."

Paradoxically, that very island remembered here is likely to be submerged because of climate change, a phenomenon which the island can bear no blame for. Many Melanesians still feel it may be God's judgement on them for the killing of Bishop Patteson. Perhaps we are the ones who need to ask forgiveness and to mend our ways?



BACKGROUND:


Patteson's murder on Nukapu with two of his colleagues was thought to be a revenge attack, after five young men from the island were kidnapped by 'Blackbirders', slavers recruiting for the Queensland or Fiji Plantations. His death resulted in such an outcry around the world that the Blackbirders' trade was stopped. Then within two years after Patteson's death, this monument was erected in 1873. It was designed by William Butterfield, the famous Victorian church architect, who designed not only Alfington Church, but much of the Victorian reordering of Ottery church. Butterfield also happened to be a personal friend of Patteson.

TO SEE

Read the main inscription. Note the sparse yet emotion-laden language, written as it was less than two years after this death. Here we are also asked to remember Joseph Atkin, a fellow priest from New Zealand and Stephen Taroaniara, who Patteson hoped would become the first ordained Solomon Islander – both who died from tetanus from the poison on the arrows fired at them at Nukapu.

Note also how the sign admits to how Europeans had been the cause of 'wrongs' which provoked this attack.





Each of the four sides of the monument speak of an aspect of his life: this southern side points towards Ottery St Mary, where he went to school, which is perhaps why the selected scripture was from Ps 119 v.9...

“Wherewithal shall a young man cleanse his way - even by ruling himself after thy word.”

Now face the side on the left that faces Exeter. This side faces the place and Cathedral where Patteson was ordained and where the carving on the front of the pulpit is of Patteson’s body wrapped in the matting - intriguingly the composition is very similar to the wooden frieze in Alfington Church. The scripture this side is taken from the mouth of Job (16.22) speaking of the brevity of our life upon the earth and could again poignantly be a commentary on Patteson himself,

“When a few years are come, then I shall go the way whence I shall not return”.

Face the north side of the monument that faces Feniton, his home village. Here you will see words presumably chosen by his uncle, Sir John Coleridge, later to become Lord Chief Justice, who paid for the monument. The words from scripture are from the prophet Nahum (1v.3) “The Lord hath his way in the whirlwind. And the clouds are the dust of his feet” ...part of a passage that speaks of the judgment of God that awaits for the ‘guilty’. Who are the guilty here? Is this referring to the ‘savage men’ who killed him or the ‘Europeans’, whose actions provoked such an extreme reaction. Or are we now the guilty - as our degradation of the planet directly effects places such as Melanesia?

Face the side that faces east in the direction of Honiton, the direction Patteson left, for his long journey. The scripture carved on this side (Prov.4.18) comes from a section of the book of Proverbs that encourages a young man to seek wisdom, ‘though it cost all you have’ Prov. 4.7. It says, “The path of the just is as the shining light that shines more and more unto the perfect day”.

TO PRAY:

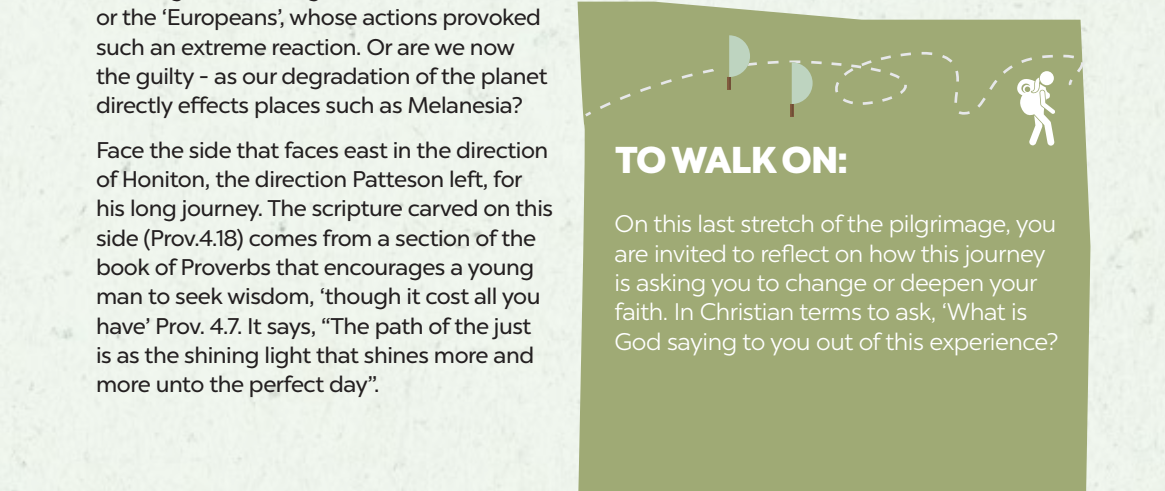
Return to the front of the Monument and you will find a prayer already for you and any who would turn aside and learn something of this inspirational life.

Stand for a moment, listening to the hurry of traffic and of life going on around you. Remember here Patteson and his companions, remember the islanders of Nukapu. And if you wish and if you can, pray the prayer Sir John Coleridge has left us to pray:



*Lord Jesus,
grant that we may live to thee
like him,
and stand in our lot
with him
before thy throne,
at the end of the days.
Amen*

TO WALK ON:



On this last stretch of the pilgrimage, you are invited to reflect on how this journey is asking you to change or deepen your faith. In Christian terms to ask, ‘What is God saying to you out of this experience?’

DISTANCE

1.9 miles /
3 km

TIME



45 minutes

DIRECTIONS

STAGE 4

Patteson's Cross to Feniton



OS: SY 09568 97645

Latitude/Longitude:

50°46'17"N , 003°17'02"W

What3Words:

vocals.ears.poorly

Address:

Patteson's Cross, B3177, Gosford,
Ottery St Mary, Devon, EX14 3AZ

OS: SY 10862 99417

Latitude/Longitude:

50°47'15"N , 003°15'57"W

What3Words:

edgy.salutes.severe

Address:

St Andrew's, Church Lane,
Feniton, Devon, EX14 3BY



Directions

From the memorial turn right and follow the main road towards Honiton.

There is no footpath along this road for the first section, so take care and walk in single file.

Cross the road, taking the footpath bridge over the A30. After the bridge follow the footpath up the hill and across open fields.

Continue along this footpath, across two stiles onto Green Lane. Turn right and head along the road. At the next junction, turn right into Feniton Village. Turn left into Church Lane and back to the church.

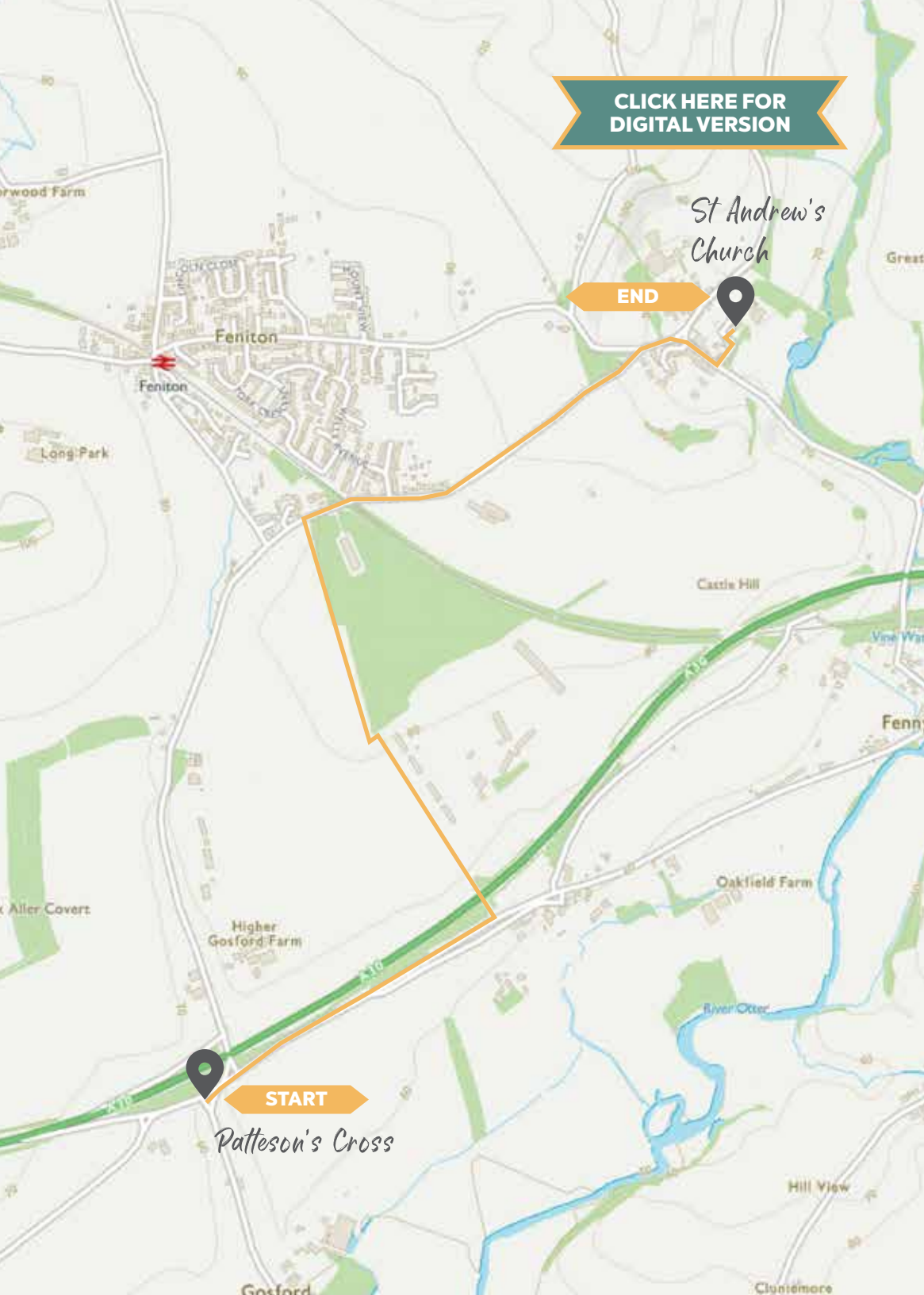
[CLICK HERE FOR DIGITAL VERSION](#)

St Andrew's Church

END

START

Patteson's Cross



PILGRIMAGE SITES



THE MELANESIAN CHAPEL

Feniton Church

BACKGROUND:

Here at the east end of the South Aisle, is what has become known as the Melanesian Chapel. At the time of Patteson it would have been a private pew for his family, as occupants of Feniton Court, with the door serving as the family's entrance.

TO DO:

This chapel has now been set aside for reflection and a space to pause. So having been active by your pilgrimaging, now give yourself time to sit and reflect and pray.

Use the **Pilgrimage Reflection Book** to write or draw or craft a poem or prayer to mark your journey and to encourage others who will come after you.

Use the **Tree of Light**.

Leave prayer requests for others to pick up.

Stay silent for a time, without expectation on yourself to think or do anything. Through attentiveness and silence listen for that 'still small voice'.



TO SEE:



Memorial Window and Brass Plaque

Bishop Patteson would have never seen the imposing window put there in memory of his father. The allusion used for Sir John is King Solomon and his wisdom as an eminent judge – yet is neatly coincidental because here we remember The Solomon Islands, which became such a part of family history through Bishop Patteson!

The Floor Slab Memorial..

...Lists the members of the family remembered here.

The Melanesian Altar Cross...

...Given as thanksgiving from the people of Melanesia, inlaid with shells from the islands.

Palm Prayer Mat

Made of a common material in Melanesia, used for many purposes, including, in our story, wrapping the body of Bishop Patteson.

Bust of Bishop Patteson

This rather stern bust of Patteson used to live in Lambeth Palace, but now has come back to his home church to cast its gaze on pilgrims and visitors and locals alike. So what do you think Patteson would say to us, to you, if he could?

Copy of the Famous Telegram

The news of Patteson's death came slowly, from Norfolk Island where most missionaries were based, to New Zealand.

This telegram made the event known and sent shock waves around the world that a bishop and such a bishop should be put to death.

Though Patteson died on the 20th Sept 1871, you'll see the date on the telegram is 3rd November and the date of his death is incorrect, as is the spelling of his name!



TO PRAY:

The Special Prayer for Patteson's Day (September 20th)

God of all tribes and people's and tongues, who called your servant John Coleridge Patteson to witness in life and death to the gospel of Jesus amongst the peoples of Melanesia: grant us to hear your call to service and to respond trustfully and joyfully to Jesus Christ our Redeemer, who is alive and reigns with you, in the unity of the Holy Spirit, one God, now and in the days to come.

Amen

